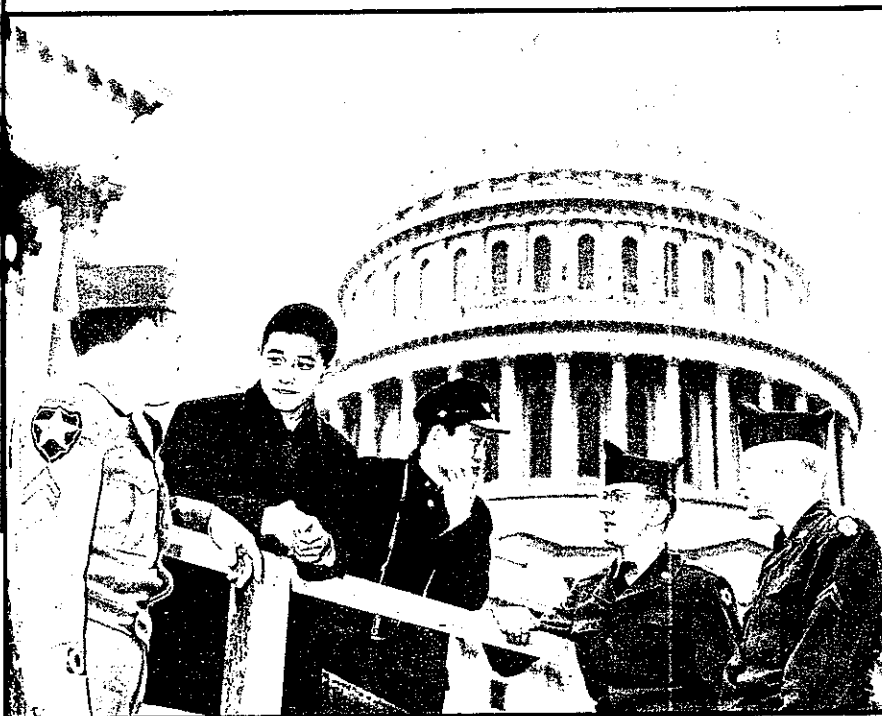
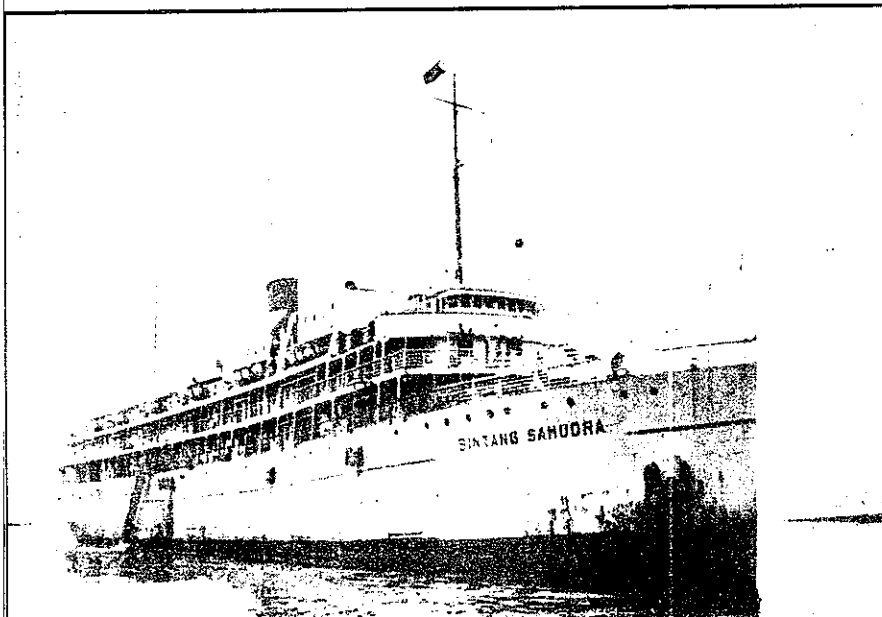


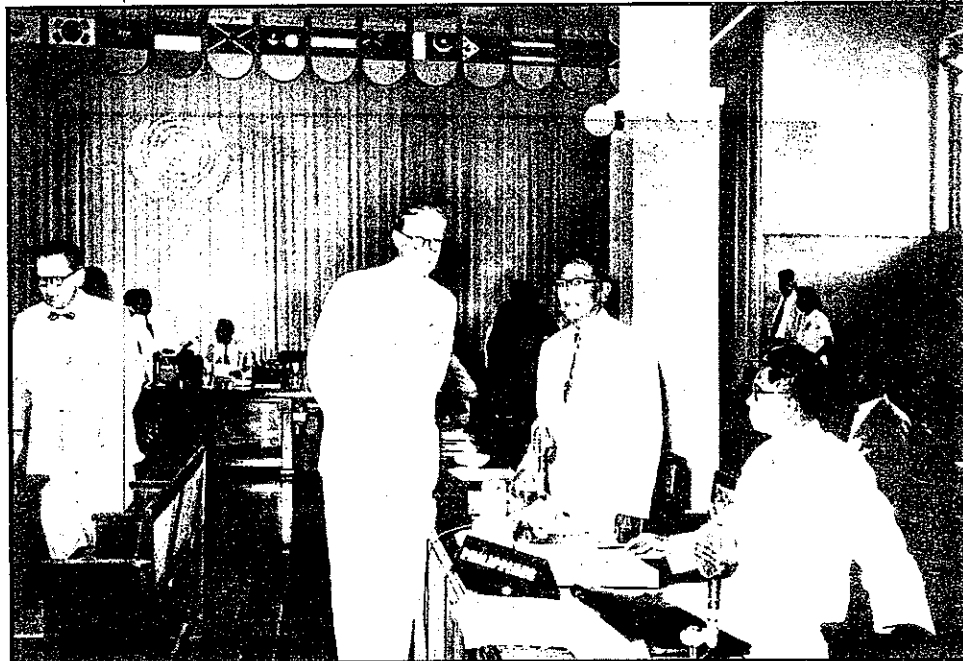
"GATEWAY TO THE EAST", graceful architectural symbol, sets keynote at big 1953 Philippines International Exposition.



TOURING STUDENTS from Japan and Korea talk with U. S. soldiers in front of capitol in Washington.



FIRST INDONESIAN passenger ship to visit Manila is the 1200-passenger "Bintang Samudra" (Pacific Star).



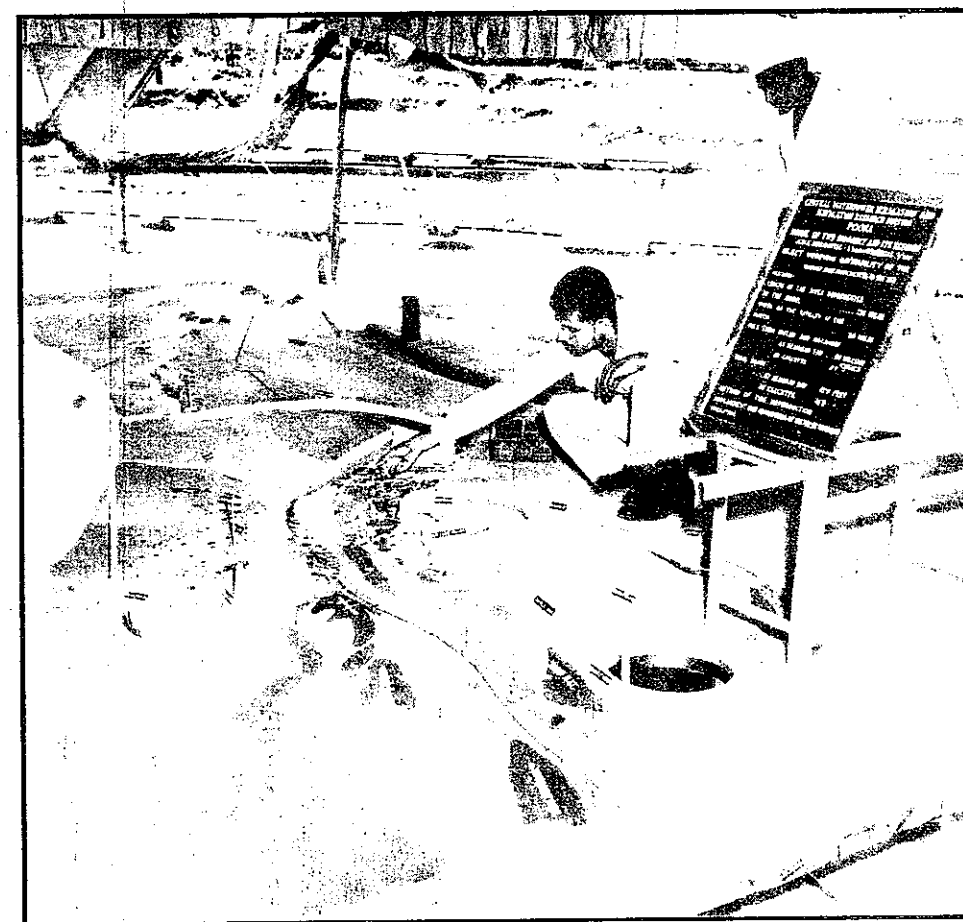
INDUSTRY AND TRADE committee of UN's Economic Commission for Asia and Far East chooses Philippine delegate Mendinueto (center) chairman of sessions in Indonesia.



THAI MECHANICS and U. S. advisor check engine on plane furnished growing Thai air force by U. S. military aid program.



YOUNG GUESTS pose for picture with U. S. admiral as cruiser Pittsburgh visits Indian port of Madras.



PERFECT SCALE model of big river's course helps Indian engineers plan river valley improvement projects.