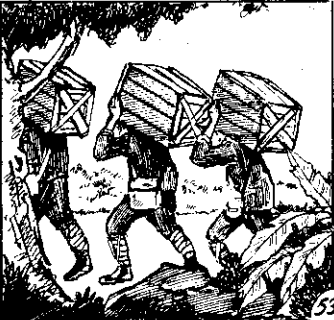


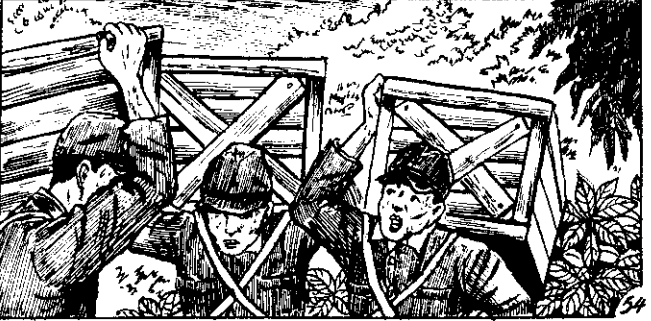
阿花仔  
阿某仔  
阿某仔



53 紐一歲分被入三溪河與潭秋、欽長  
○鎮小「巴黎」是標目，出迷于箱着始各

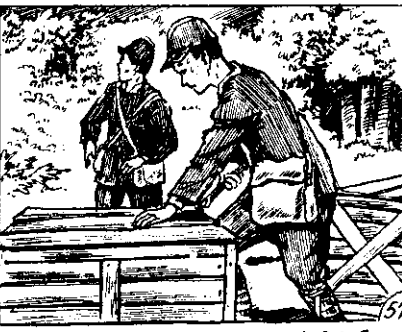
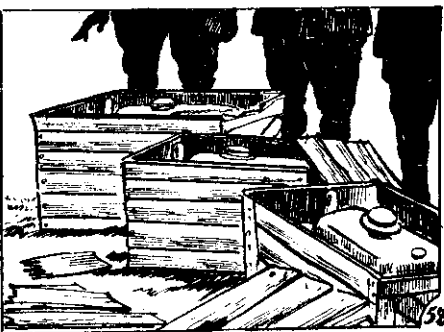
52 毀好西東的室家將家大，運糧地山向令奉開知倉早日，是於  
○元帶身隨的便輕把

9 回九第



55 來下放于箱將便，人無顧回們他

54 : 答津款? [麼什是面裡猜你]: 問欽長! [重很于箱], 說塗阿  
○[物食頭確的吃以可是想我]



58 連馬車汽的個個一足，頭確是不內箱來原

57 開打于蓋的箱木把，頭石起拿欽長

56 子歸出取內袋衣從塗阿