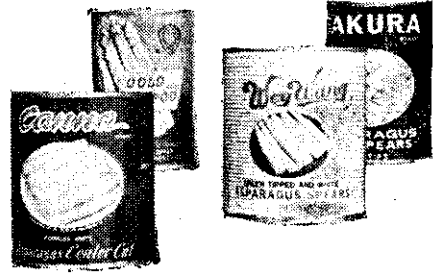


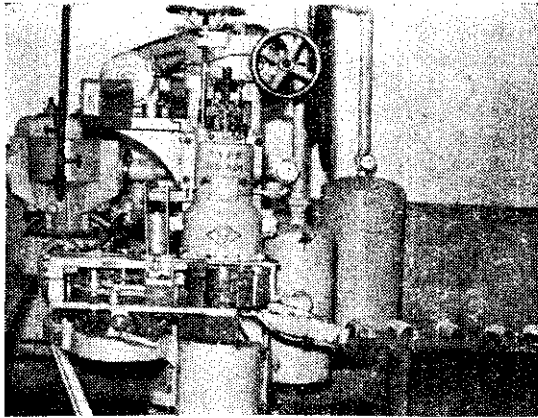


裝即後理整再，筍蘆的皮外去削：罐裝③  
。裏罐進

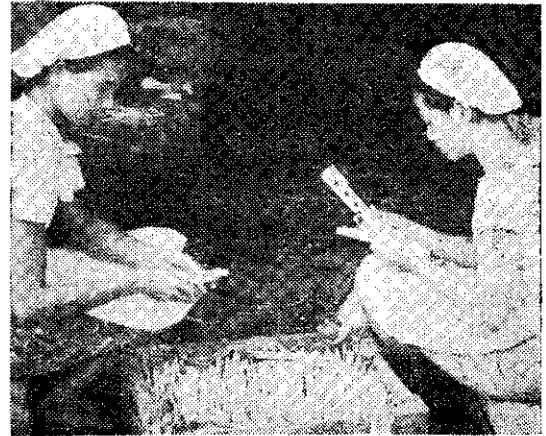
## ，頭罐筍蘆 ？成製樣怎



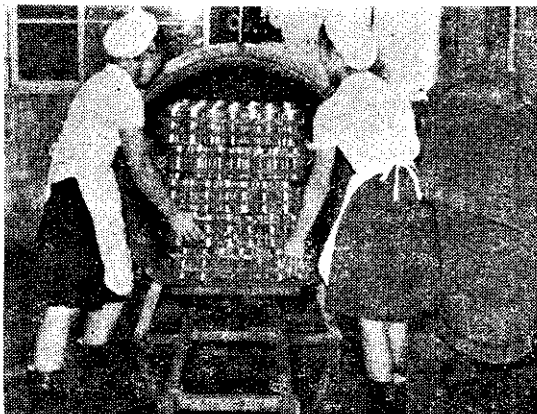
。成保。



。封密頭罐把器機用：罐封④



。級分選精過經先首，後廠進筍蘆：級分①



，毒消溫高用，裏爐鍋進送：毒消熱加⑤  
。成完序程的罐製



更筍蘆裝罐使，皮外去削後級分：皮削②  
。口可更嫩