

仙履蘭之育種

高水恩

清華蘭園有限公司

前言

廣義 *Paphiopedilum* 即仙履蘭大致分為四個屬：

- ◆ *Selenipedium*—中、南美洲
- ◆ *Phragmipedium*—南美洲
- ◆ *Cypripedium*—分部很廣，歐、南美、北美及亞洲
- ◆ *Paphiopedilum*—亞洲地區

List of Accepted Species in the Genus *Paphiopedilum*

The background is a solid teal color. At the bottom right corner, there is a silhouette of a mountain range in a slightly darker shade of teal.

Subgenus *Barbata* — 斑葉種

- ◆ *Paph. purpuratum*
- ◆ *Paph. javanicum*
- ◆ *Paph. appletonianum*
- ◆ *Paph. wardii*
- ◆ *Paph. callosum*
- ◆ *Paph. hookerae*
- ◆ *Paph. superbiens*
- ◆ *Paph. papuanum*
- ◆ *Paph. bullenianum*
- ◆ *Paph. barbatum*
- ◆ *Paph. argus*
- ◆ *Paph. hennisianum*
- ◆ *Paph. dayanum*
- ◆ *Paph. ciliolare*

Subgenus *Barbata* — 斑葉種

- ◆ *Paph. acmodontum*
- ◆ *Paph. tonsum*
- ◆ *Paph. mastersianum*
- ◆ *Paph. schoseri*
- ◆ *Paph. urbanianum*
- ◆ *Paph. fowliei*
- ◆ *Paph. bougainvilleanum*
- ◆ *Paph. venustum*
- ◆ *Paph. sukhakulii*
- ◆ *Paph. lawrenceanum*
- ◆ *Paph. sangii*
- ◆ *Paph. violascens*
- ◆ *Paph. hennisianum*

Paph. callosum '#21' SM/TPS



Paph. callosum 'V12' SM/TPS



Paph. hookerae var. volentianum



Paph. superbiens album 'Tokyo' BM/JOGA



Paph. superbiens var. curtisii 'Ching Hua Giant' BM/TOGA



Paph. mastersianum



Paph. venustum



Paph. sukhakulii '#6'



Paph. lawrenceanum 'Jurassic Park' BM/GOG



Paph. lawrenceanum



Subgenus *Pardalopetalum*

— 連續性花序(多花)

- ◆ *Paph. haynaldianum*
- ◆ *Paph. lowii*
- ◆ *Paph. parishii*
- ◆ *Paph. dianthum*

Paph. lowii 'Discovery'



Subgenus *Coryopedilum*

— 同時性(多花)

- ◆ *Paph. adductum*
- ◆ *Paph. anitum*
- ◆ *Paph. rothschildianum*
- ◆ *Paph. stonei*
- ◆ *Paph. supardii*
- ◆ *Paph. kolopakingii*
- ◆ *Paph. gigantifolium*
- ◆ *Paph. glanduliferum*
- ◆ *Paph. wilheminae*
- ◆ *Paph. philippinense*
- ◆ *Paph. sanderianum*

Paph. anitum



Paph. anitum 'Black Magic'



Paph. rothschildianum 'New Horizon' FCC/AOS



Paph. rothschildianum 'Sunlight Tiger'



Paph. stonei album



Paph. stonei 'YJ #1'



Paph. kolopakingii album 'Green Elf'



Paph. gigantifolium



Paph. glanduliferum



Paph. philippinense 'Crown'



Paph. philippinense v. aereum 'Ching Hua'



Paph. sanderianum



Subgenus *Paphiopedilum*

— 仙履蘭亞屬

- ◆ *Paph. gratixianum*
- ◆ *Paph. insigne*
- ◆ *Paph. villosum*
- ◆ *Paph. charlesworthii*
- ◆ *Paph. exul*
- ◆ *Paph. henryanum*
- ◆ *Paph. barbigerum*
- ◆ *Paph. tigrinum*
- ◆ *Paph. druryi*
- ◆ *Paph. spicerianum*
- ◆ *Paph. hirsutissimum*
- ◆ *Paph. fairrieianum*

Paph. gratixianum 'C.H. #2'



Paph. villosum 'C.S.Ⅲ'
BM/TOGA



Paph. villosum 'Hsinying' BM/TPS



Paph. charlerworthii 'Mega Ship'



Paph. charlesworthii album 'Hsinying'



Paph. henryanum 'Moon'



Paph. barbigerum 'Ching Hua'



Paph. spicerianum



Paph. spicerianum

Paph. hirsutissimum var. esquirolei 'Djoin'



Paph. fairrieanum var. album
'Ching Hua #12' SM/TOGA



Paph. fairrieanum



Subgenus *Cochlopetalum*

— 間斷性花序(多花)

- ◆ *Paph. glaucophyllum*
- ◆ *Paph. victoria-mariae*
- ◆ *Paph. victoria-reginae*
(*chamberlainianum*)
- ◆ *Paph. primulinum*

Paph. victoria-reginae (chamberlainianum) 'Ching Hua'



Subgenus *Brachypetalum*

— 短瓣亞屬

- ◆ *Paph. concolor*
- ◆ *Paph. bellatulum*
- ◆ *Paph. wenshanense*
- ◆ *Paph. godefroyae*
- ◆ *Paph. niveum*
- ◆ *Paph. thaianum*

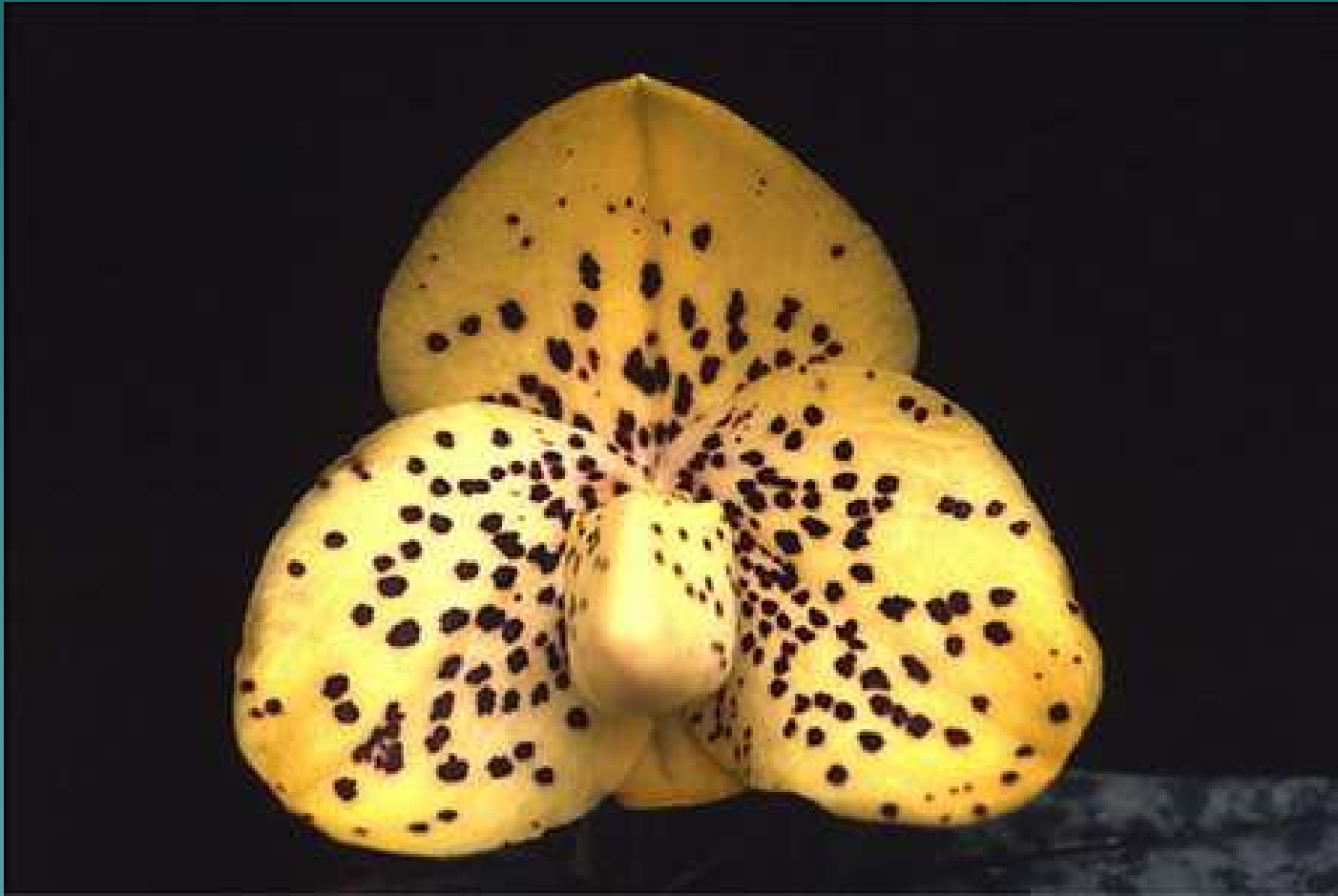
Paph. bellatulum 'Big Bear'



Paph. bellatulum



Paph. wenshanense



Paph. godefroyae 'Black'



Paph. godefroyae



Paph. niveum 'HOF'



Paph. thaianum



Subgenus *Parvisepalum*

— 硬葉亞屬

- ◆ *Paph. armeniacum*
- ◆ *Paph. micranthum*
- ◆ *Paph. emersonii*
- ◆ *Paph. hangianum*
- ◆ *Paph. delenatii*
- ◆ *Paph. vietnamense*
- ◆ *Paph. malipoense*

Paph. armeniacum 'Super Gold' SM/TPS



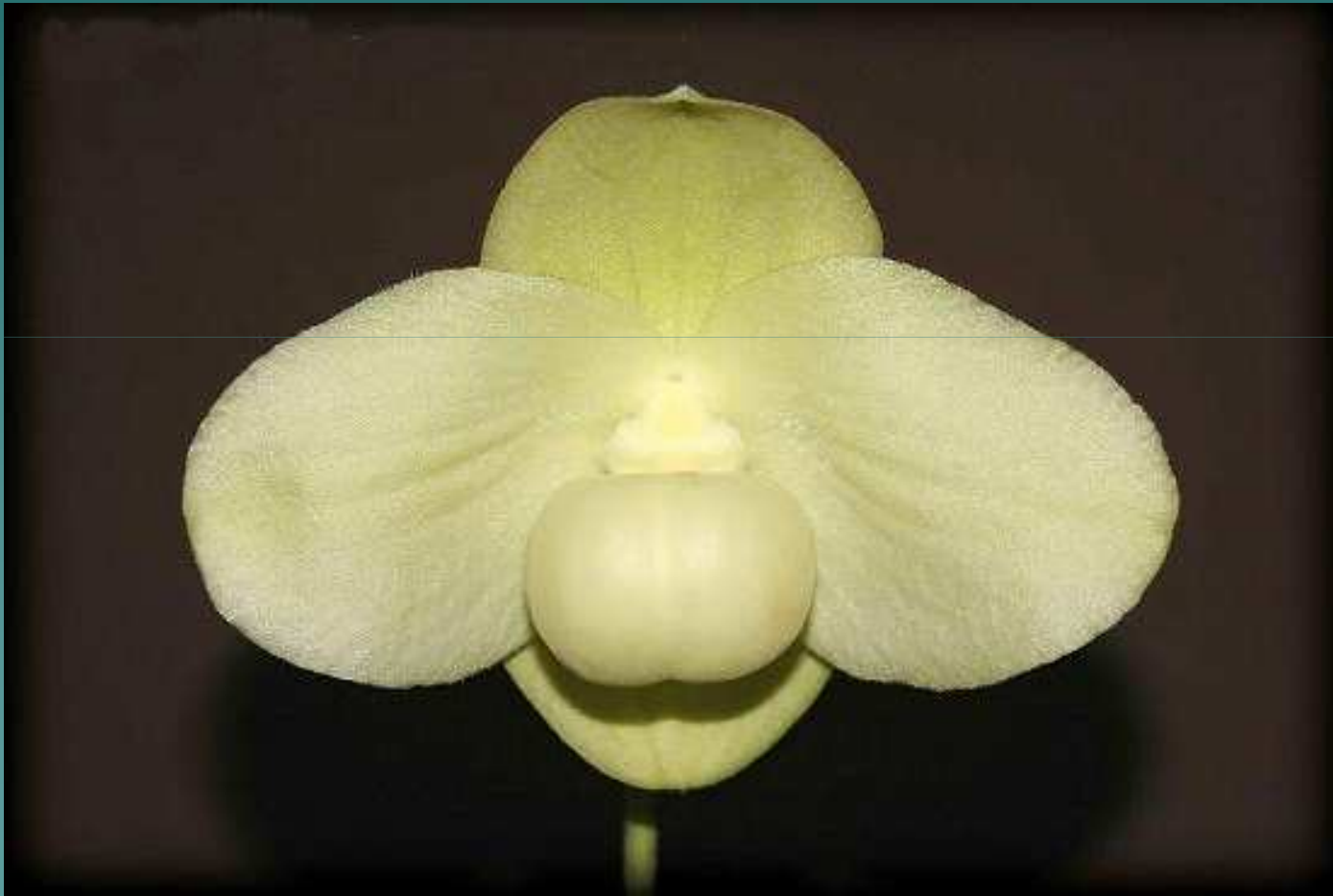
Paph. armeniacum



Paph. micranthum



Paph. hangianum fma.
album 'Bear'



Paph. hangianum



Paph. delenatii semi-alba



Paph. delenatii var. album



Paph. vietnamense



Paph. malipoense 'Green Elf'



商業栽培品系的育種目標

- ◆ 栽培容易、須少病蟲害，生長快速、栽培性良好
- ◆ 開花性良好、須幼年期短、開花率與整齊度高
- ◆ 適當的植株大小、利於包裝、運輸
- ◆ 易於大量繁殖、大量生產
- ◆ 較長的開花觀賞壽命等

Paph. callosum



Paph. lawrenceanum



Paph. superbiens



Paph. sukahkulii



Paph. Macbrae 'Big Patel'



Paph. mastersianum



Paph. venustum



Paph. fairrie anum



Paph. Friedrich Mellin (Alma Gevaert x fairrieanum var. album)



Paph. Hsinying Fair Rook 'Day and Night' (fairrieanum x Hsinying Rook)



Paph. spicerianum



Paph. spicerianum

Paph. spicerianum Hybrid



Paph. delenatii



Paph. malipoense



Paph. armeniacum



Paph. micranthum



Paph. niveum



Paph. Norito Hasegawa (armeniacum x malipoense)



Paph. Sugar Suite (niveum x emersonii)



Paph. Magic Lantern (micranthum x delenatii)



Paph. Fanaticum (micranthim x malipoense)



Paph. Franz Glanz (emersonii x armeniacum)



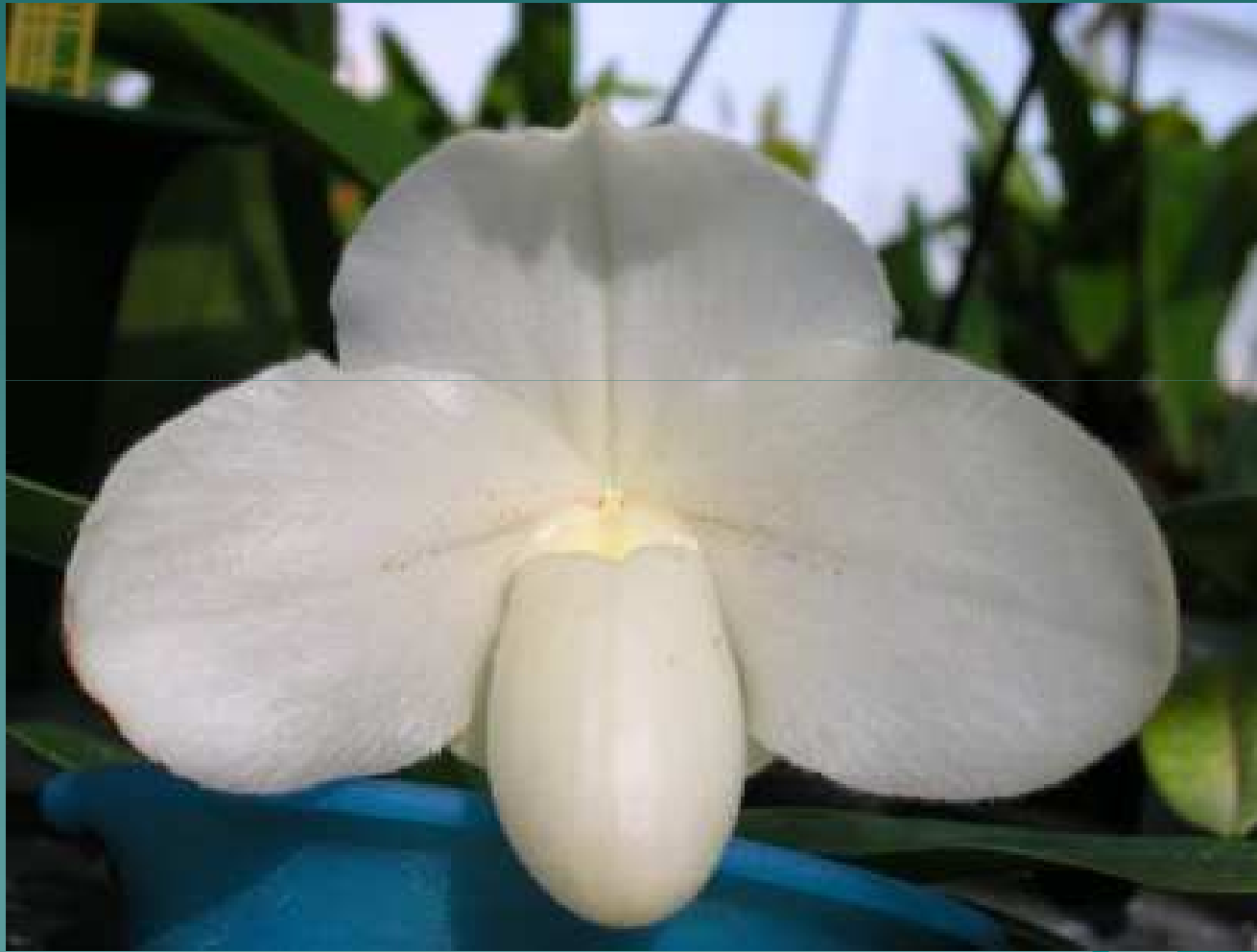
Paph. Chouyi Yuki (nevium x hangianum)



Paph. In-Charm Boulder (Pacific Shamrock x In-Charm White)



Paph. In-Charm Pearl 'Purity-1'
(wenshanense x In-Charm White)



Paph. Hsinying Moonlight (primulinum x Yosemite Moon)



優良之親本（雜交種）

Paph. Hsinying Macasar



Paph. Hsinying Web



Paph. Hsinying Almachi



Paph. Somers Isles



Paph. Hsinying Citron



Paph. Hsinying Artist



Paph. Hsinying Rocket 'Blood Ruby' (Jolly Roger x Cyberspace)



趣味玩賞品系的育種

Paph. adductum var. anitum



Paph. sanderianum



Paph. rothschildianum



Paph. stonei



Paph. philippinense



Paph. gigantifolium



Paph. bellatulum



Paph. godefroyae



Paph. wenshanense (conco-bellatulum)



Paph. vietnamense



Paph. hangianum



Paph. Shun-Fa Golden (malipoense x hangianum)



Paph. Karl Ploberger
(hangianum x bellatulum)



Paph. Prince Edward of York (sanderianum x rothschildianum)



Paph. Shin-Yi Fireball (Berenice x Genevieve Booth)



Paph. Michael Koopowitz (philippinense x sanderianum)



多花品系開花例

Paph. Wössner Black Wings (rothschildianum x anitum)



Paph. Hung Sheng Eagle (gigantifolium x rothschildianum)



Paph. Hsinying Anita (Lady Isabel x anitum)



Paph. Hsinying Anibeau (Labeau x anitum)



Paph. Kolosand 'Green Dragon' (kolopakingii x sanderianum)



Paph. Yang-Ji Hawk 'Haur Ji #6' (sanderianum x anitum)



Paph. Shin-Yi's Pride (rothschildianum x Michael Koopowitz)



Paph. (Vanguard x anitum)



Paph. Dollgoldi (rothschildianum x armeniacum)



Paph. Gloria Naugle (rothschildianum x micranthum)



Paph. Sommerwind 'Red Ruby' (micranthum x Saint Swithin)



Paph. Pink Sky (Lady Isabel x delenatii)



Paph. Liberty Taiwan (micranthum x hangianum)



Paph. Chen Samn Freedom
'Chen Samn II' SM/TPS
(Sierra Bell x hangianum)



Paph. Dick Wagner (*Fanaticum* x *bellatulum*)



Paph. S. Gratrix (godefroyae x bellatulum)



Paph. Magic Lantern f. album (micranthum x delenatii)



Paph. Fanaticum 'Snow White' (malipoense x micranthum)



Paph. Karl Ploberger (bellatulum x hangianum)



標準型仙履蘭

(Standard Complex Hybrids)

- ◆ 育種目標為質地亮麗、大而圓滿之各色良花，尤其是臘質的表面上帶有晶瑩亮麗的斑點。

Paph. Sorcerer's Stone 'Green Mountain'



Paph. Hsinying Gold



Paph. Elfstone 'Monument'



Paph. Amber Shell 'Vi-Kamogawa'



Paph. Hsinying Compensa 'Ching Hua' SM/TOGA



Paph. Keyeshill 'Carpinteria' AM/AOS



Paph. Pandemonium 'Shock Wave'



Paph. Jenna Marie 'Sparkle' AM/AOS



Paph. White Knight



Paph. Silent Knight 'Ching Hua #1'



Paph. Tokyo Knight Dream



Paph. Mystic Knight 'Hsinying'



標準型(Complex)與
硬葉亞屬(Parvisepalum)、
短瓣亞屬(Brachypetalum)
之交配種

Paph. In-Charm White



Paph. Chou-Yi Gold (concolor x Hsinying Halo)



標準型 (Complex) 與 Maudiae Type之結合

Paph. Hsinying Pacila 'C.H.'

(Great Pacific x Laser)



Paph. Hsinying Thunder (Western Thunder x Candy Apple)



今後之展望

- ◆ 由於其特殊之花型與品味，耐候性佳、觀賞壽命長，將更受消費者歡迎。在找出優良組合品系與繁殖技術有所突破之後，台灣將在世界的仙履蘭市場上佔有更重要角色。
- ◆ 只要我們仙履蘭業界能鎖定目標，續求精進，未來必能遵循蝴蝶蘭模式，成就另一個「仙履蘭王國」。



謝謝聆聽 敬請指教